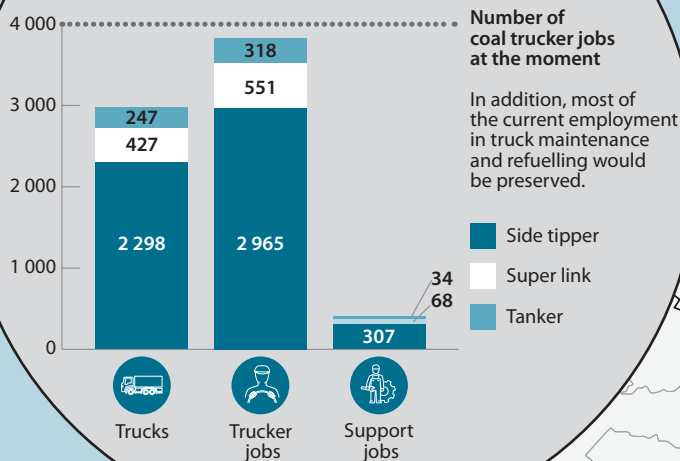


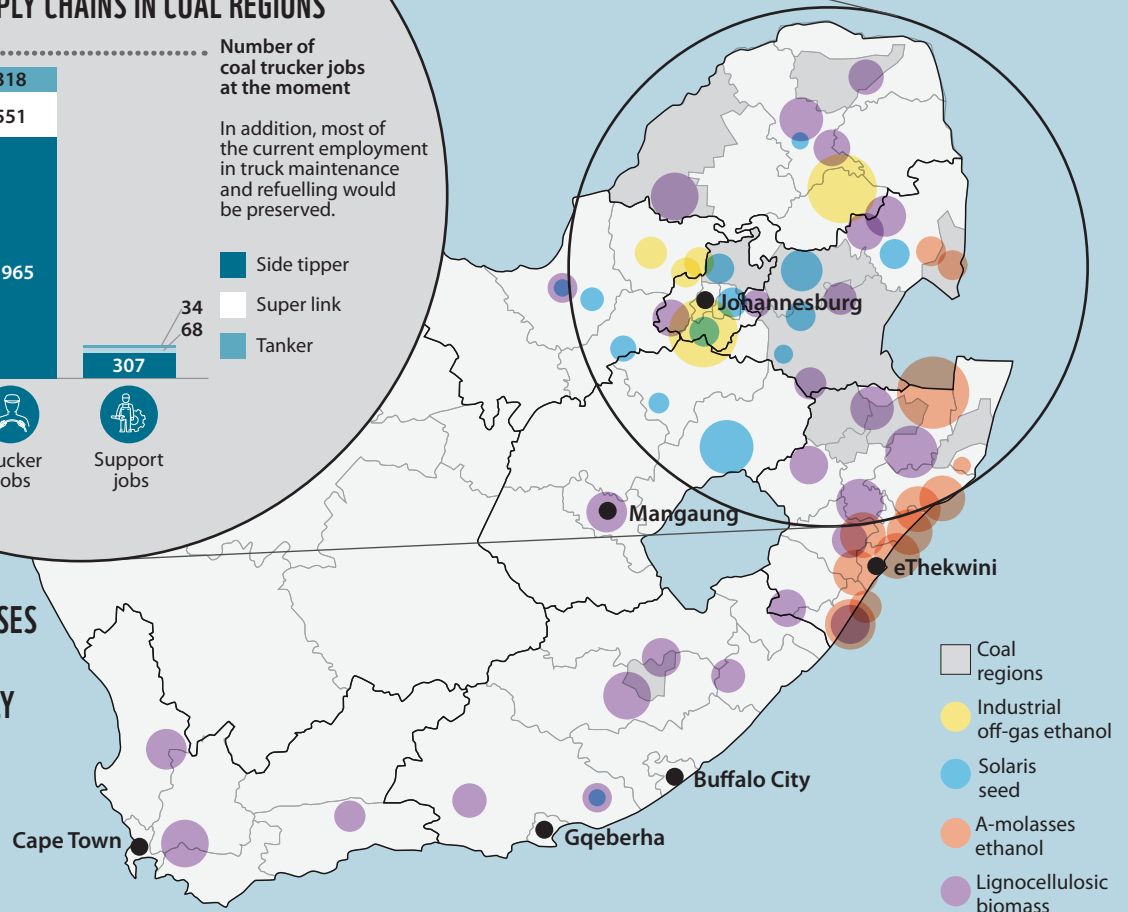


EXPLORING ALTERNATIVE OPTIONS FOR COAL TRUCKERS IN A BIOMASS SUPPLY CHAIN

POTENTIAL NUMBER OF TRUCKS AND JOBS CREATED BY IMPLEMENTING BIOMASS SUPPLY CHAINS IN COAL REGIONS



DISTRIBUTION OF HOME-BASES FOR DRIVERS REQUIRED TO FACILITATE BIOMASS SUPPLY CHAINS IN SOUTH AFRICA



LIGNOCELLULOSIC BIOMASS AND SYNCRUDE SUPPLY CHAIN

A total of 3 076 driver jobs could be created in coal regions and most of them in the primary transportation leg that utilises tipper trucks, making it the pathway with the highest trucking employment potential.

This is just under half of the 6 400 trucking jobs which could be created nationally through this supply chain, in addition to the existing maintenance and refuelling jobs that would be preserved.

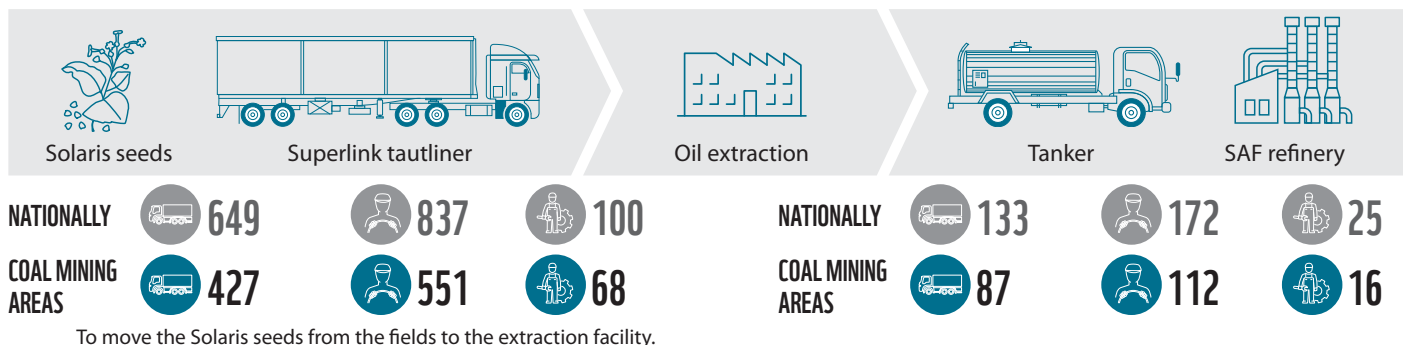


3 076 out of 6 400 trucking jobs in coal regions

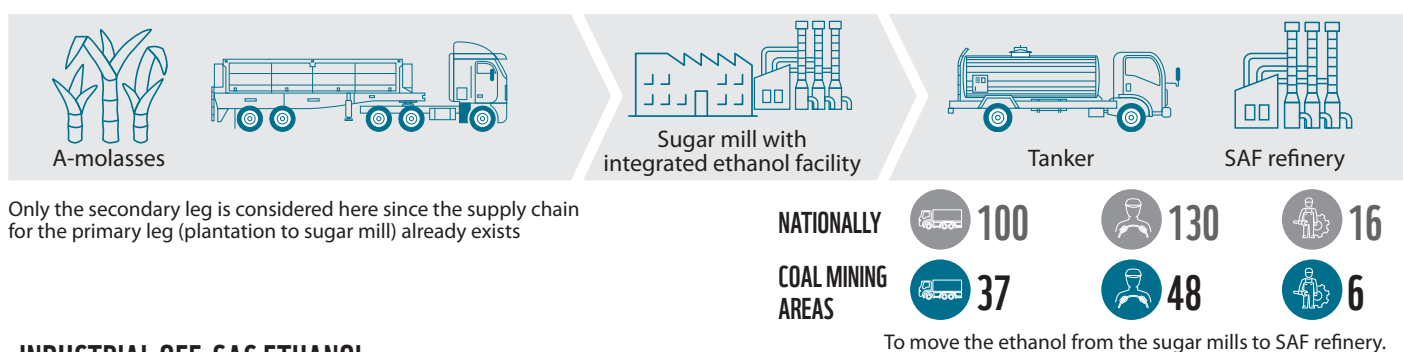
OVERVIEW OF BIOMASS-TO-SAF SUPPLY CHAINS ANALYSED FOR POSSIBLE JOB TRANSFERS

Primary transport			Secondary transport		
Raw feedstock	Truck type	Intermediate processing facility	Truck type	Final processing facility	

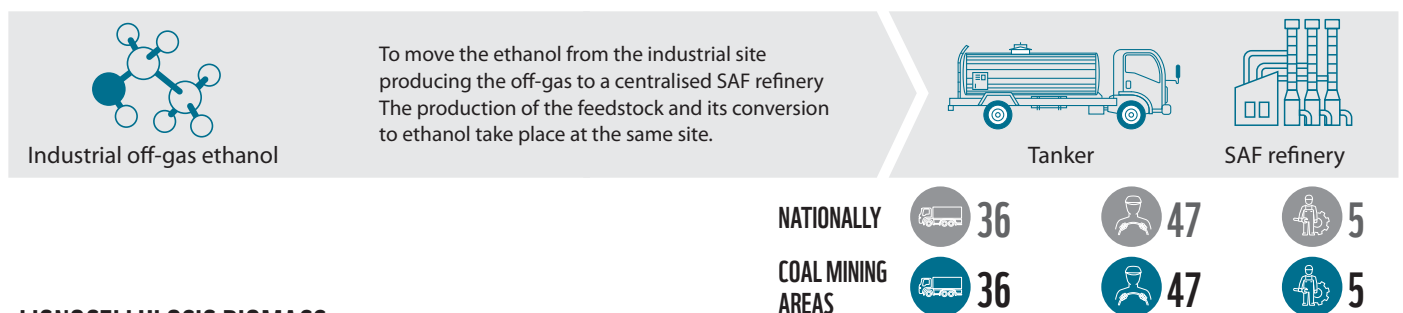
SOLARIS TABACCO



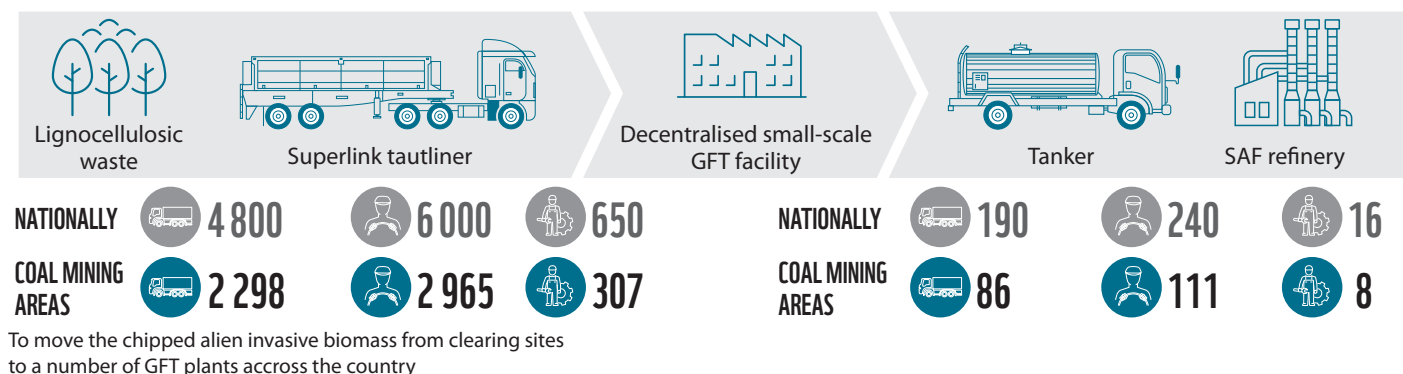
A-MOLASSES



INDUSTRIAL OFF-GAS ETHANOL



LIGNOCELLULOSIC BIOMASS



More details can be found in a full report, accessible here:

<https://www.tips.org.za/research-archive/sustainable-growth/green-economy-2/item/4320-exploring-alternative-options-for-coal-truckers-in-a-biomass-supply-chain>



To champion the Earth's capacity to provide a source of inspiration, sustainable food, water and clean energy for all.

FOR NATURE. FOR YOU.

www.wwf.org.za

© 1986 Panda symbol WWF – World Wide Fund for Nature (formerly World Wildlife Fund)

® 'WWF' is a WWF Registered Trademark

WWF South Africa, First Floor, Bridge House, Boundary Terraces, Mariendahl Lane, Newlands 7735
Tel. +27 21 657 6600 Fax: 086 535 9433

For contact details and further information, visit www.wwf.org.za or our international website at www.panda.org